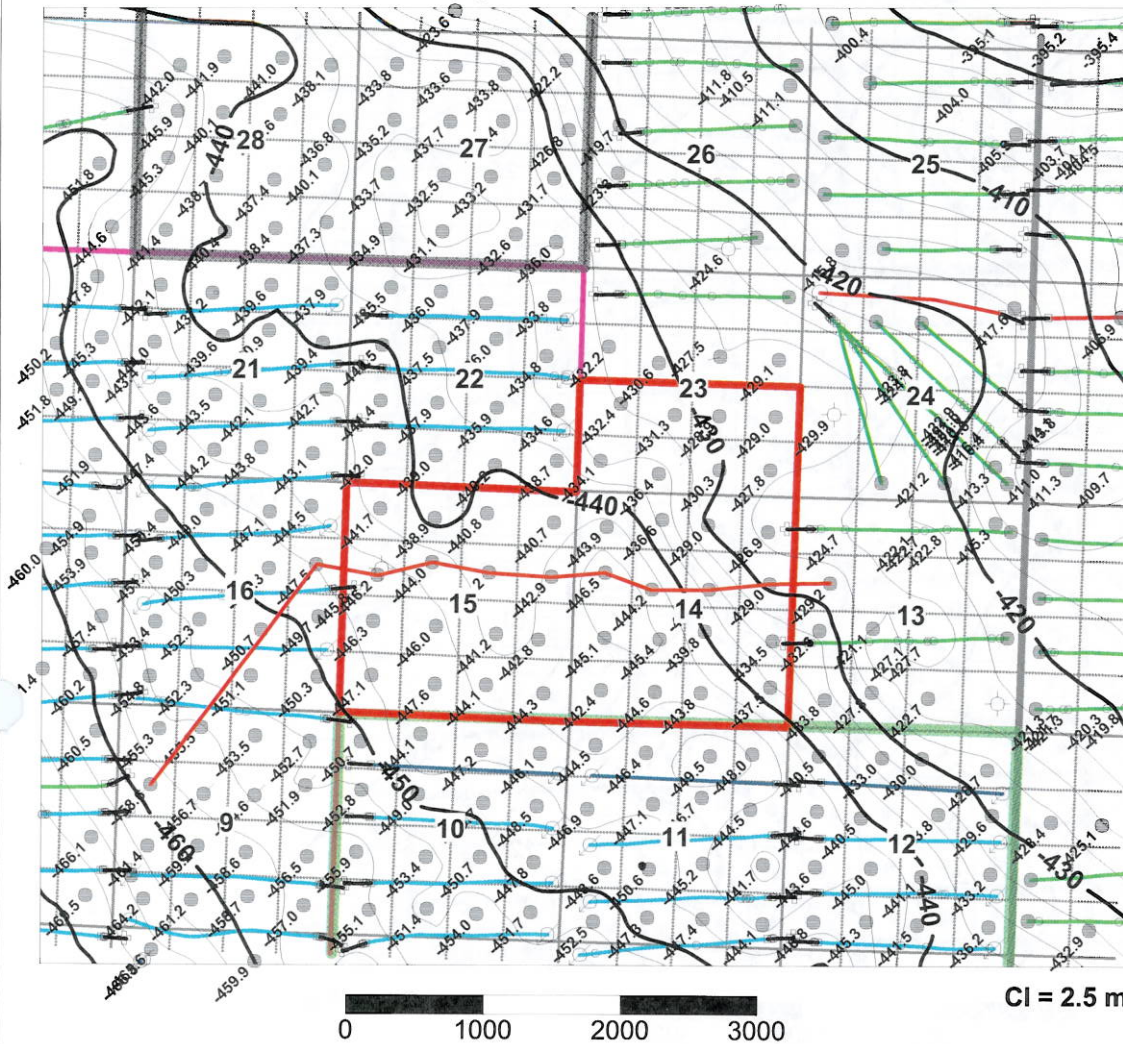


Rge 29W1M



Twp 8

CI = 2.5 m

— Line of Cross section

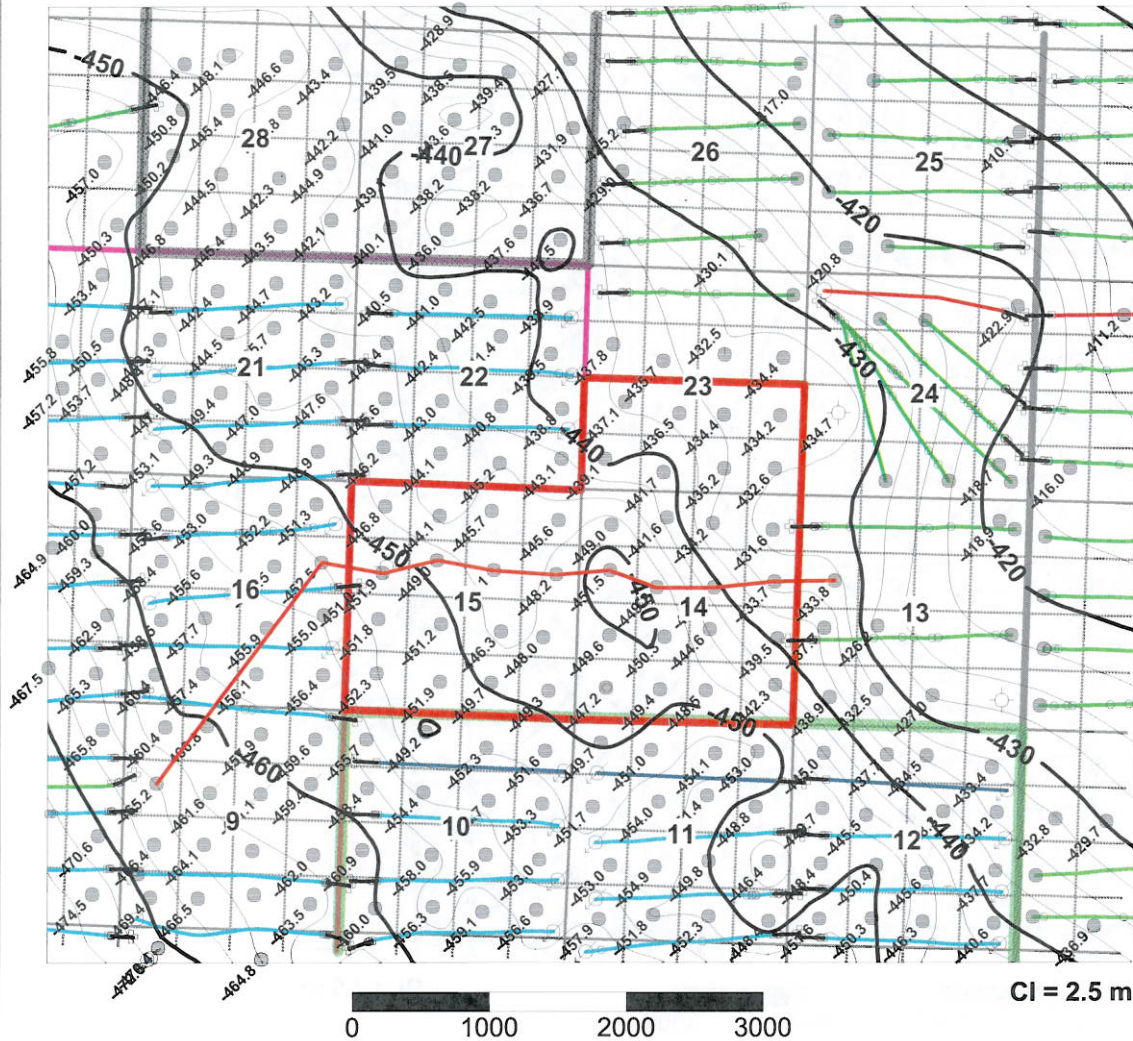
- Oilwell (including producing Hz wells)
- ◆ Abnd Oilwell
- ⊕ Hz Surface
- Intermediate Casing
- Top in Hz wellbore
- Injector
- Location

- As Drilled Hz well
- Surveyed Hz well
- As Drilled Hz WIW
- Surveyed Hz WIW
- Unit 7 Boundary
- Unit 1 Boundary
- Unit 3 Boundary
- Unit 6 Boundary

**Proposed Sinclair Unit 7
Top Lyleton B Structure
Appendix 10**

Barry W. Larson
May 14, 2011

Rge 29W1M



Twp 8

CI = 2.5 m

— Line of Cross section

● Oilwell (including producing Hz wells)

⊗ Abnd Oilwell

□ Hz Surface

□ Intermediate Casing

⊙ Top in Hz wellbore

⊗ Injector

○ Location

— As Drilled Hz well

— Surveyed Hz well

— As Drilled Hz WIW

— Surveyed Hz WIW

— Unit 7 Boundary

— Unit 1 Boundary

— Unit 3 Boundary

— Unit 6 Boundary

**Proposed Sinclair Unit 7
Top Torquay Structure
Appendix 11**

Barry W. Larson
May 14, 2011

Rge 29W1M



Twp 8

CI = 0.5 md-m

0 1000 2000 3000

**Proposed Sinclair Unit 7
Middle Bakken k-h
Appendix 12**

— Line of Cross section

- Oilwell (including producing Hz wells)
- ⦿ Abnd Oilwell
- ⊕ Hz Surface
- Intermediate Casing
- Top in Hz wellbore
- ⊙ Injector
- Location

- As Drilled Hz well
- Surveyed Hz well
- As Drilled Hz WIW
- Surveyed Hz WIW
- Unit 7 Boundary
- Unit 1 Boundary
- Unit 3 Boundary
- Unit 6 Boundary

Barry W. Larson
May 15, 2011

Rge 29W1M



TwP 8

CI = 0.05 por-m

0 1000 2000 3000

**Proposed Sinclair Unit 7
Middle Bakken Phi-h
Appendix 13**

— Line of Cross section

● Oilwell (including producing Hz wells)

⊙ Abnd Oilwell

⊕ Hz Surface

□ Intermediate Casing

○ Top in Hz wellbore

⊗ Injector

○ Location

— As Drilled Hz well

— Surveyed Hz well

— As Drilled Hz WIW

— Surveyed Hz WIW

— Unit 7 Boundary

— Unit 1 Boundary

— Unit 3 Boundary

— Unit 6 Boundary

Barry W. Larson
May 14, 2011

Rge 29W1M



Twp 8

CI = 2.5 md-m

0 1000 2000 3000

**Proposed Sinclair Unit 7
Lyleton A k-h
Appendix 14**

— Line of Cross section

- Oilwell (including producing Hz wells)
- ⊕ Abnd Oilwell
- ⊕ Hz Surface
- Intermediate Casing
- Top in Hz wellbore
- ⊗ Injector
- Location

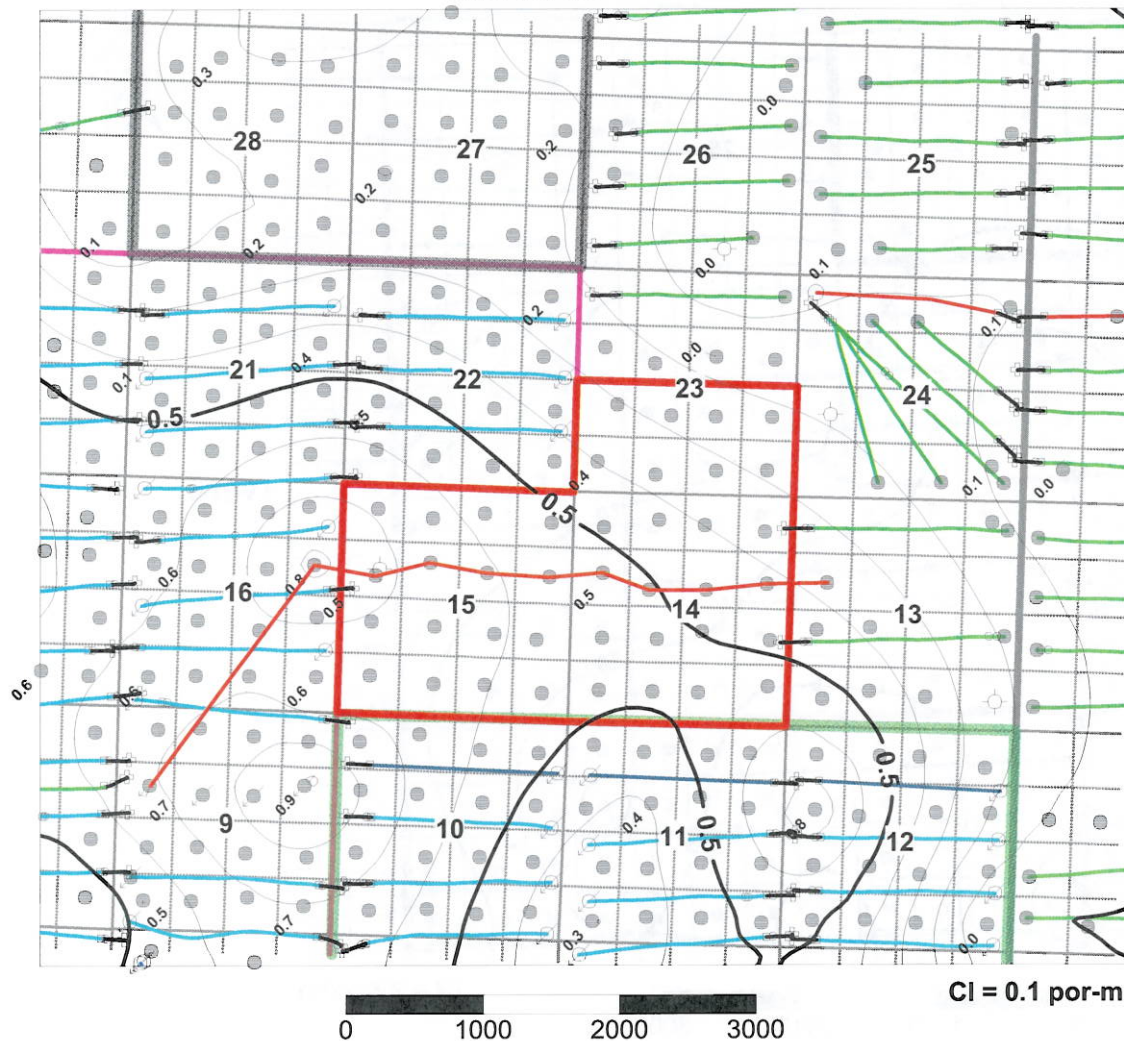
- As Drilled Hz well
- Surveyed Hz well
- As Drilled Hz WIW
- Surveyed Hz WIW
- Unit 7 Boundary
- Unit 1 Boundary
- Unit 3 Boundary
- Unit 6 Boundary

Barry W. Larson
May 15, 2011

Rge 29W1M



Twp 8



CI = 0.1 por-m

— Line of Cross section

● Oilwell (including producing Hz wells)

⊙ Abnd Oilwell

⊕ Hz Surface

□ Intermediate Casing

○ Top in Hz wellbore

○ Injector

○ Location

— As Drilled Hz well

— Surveyed Hz well

— As Drilled Hz WIW

— Surveyed Hz WIW

— Unit 7 Boundary

— Unit 1 Boundary

— Unit 3 Boundary

— Unit 6 Boundary

**Proposed Sinclair Unit 7
Lyleton A phi-h
Appendix 15**

Barry W. Larson
May 14, 2011

Rge 29W1M



Twp 8

CI = 0.5 md-m

0 1000 2000 3000

**Proposed Sinclair Unit 7
Lyleton B k-h
Appendix 16**

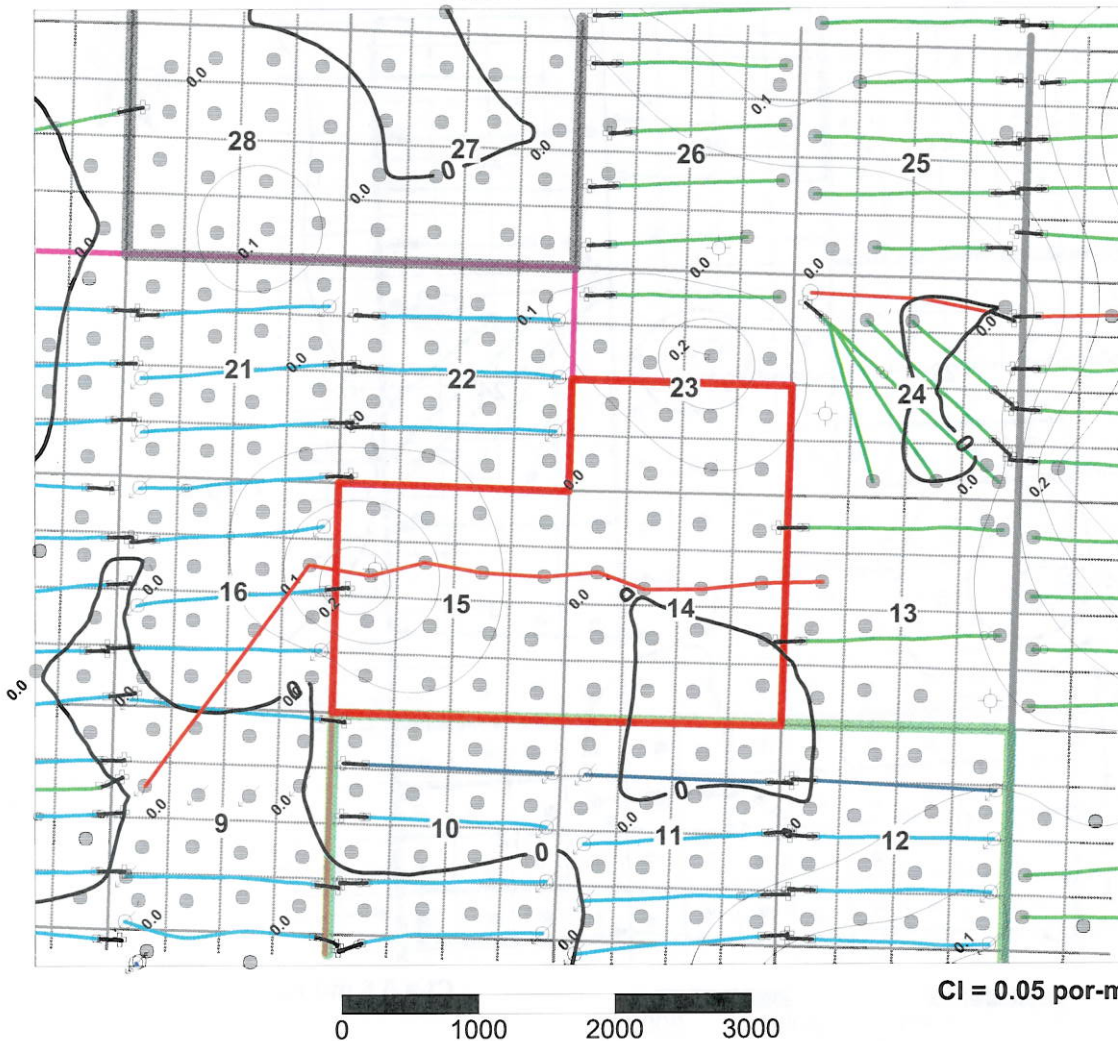
— Line of Cross section

- Oilwell (including producing Hz wells)
- ⊕ Abnd Oilwell
- ⊕ Hz Surface
- Intermediate Casing
- Top in Hz wellbore
- ⊕ Injector
- Location

- As Drilled Hz well
- Surveyed Hz well
- As Drilled Hz WIW
- Surveyed Hz WIW
- Unit 7 Boundary
- Unit 1 Boundary
- Unit 3 Boundary
- Unit 6 Boundary

Barry W. Larson
May 15, 2011

Rge 29W1M



Twp 8

CI = 0.05 por-m

Line of Cross section

Oilwell (including producing Hz wells)

Abnd Oilwell

Hz Surface

Intermediate Casing

Top in Hz wellbore

Injector

Location

As Drilled Hz well

Surveyed Hz well

As Drilled Hz WIW

Surveyed Hz WIW

Unit 7 Boundary

Unit 1 Boundary

Unit 3 Boundary

Unit 6 Boundary

**Proposed Sinclair Unit 7
Lyleton B phi-h
Appendix 17**

Barry W. Larson
May 14, 2011